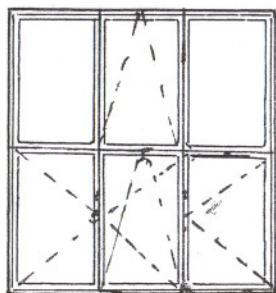


WYKAZ STOLARKI OKIENNEJ
ZS LISZNO skala 1:50
Segment 1

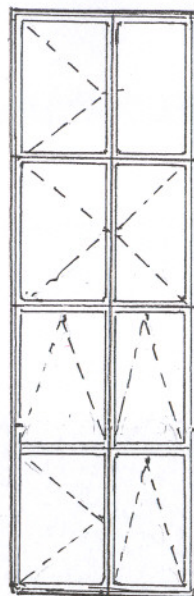
Stolarka okienna



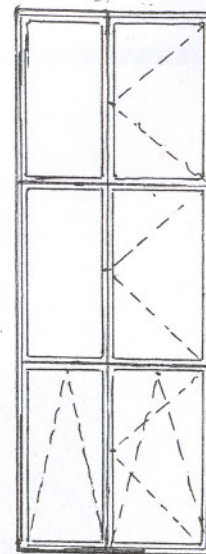
O₁ szt- 31
h= 185 , s=175



O₂ szt -4
h=182 , s=92



O₃ szt -1
h = 390, s =125



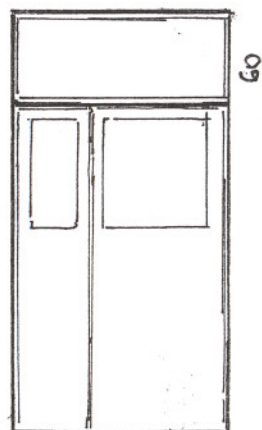
O₄ szt -1
h=335 s=105



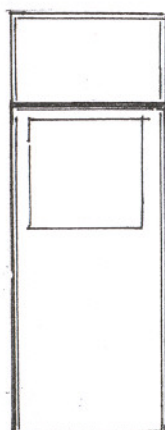
O₅ szt -2
h = 180 s=50

Stolarka drzwiowa

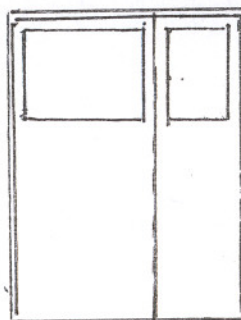
/segment I D1 +D2, segment II =D3



D₁ szt 1
H = 280 ,s= 140



D₂ szt 1
h= 282 , s =105

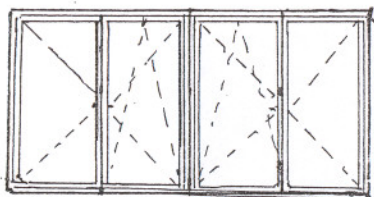


D₃ szt 1
h= 203 ,s=150

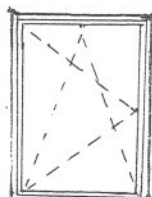
WYKAZ STOLARKI OKIENNEJ I DRZWIOWEJ ZS LISZNO

Segment 2 skala 1:50

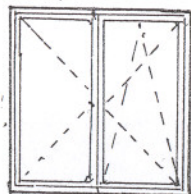
Stolarka okienna



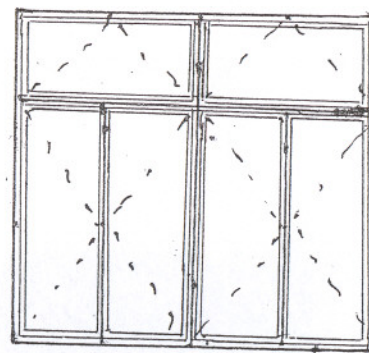
O₆ szt 11
h= 115 ,s = 2x 118



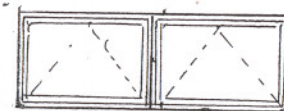
O₇ szt 2
h =115 s=88



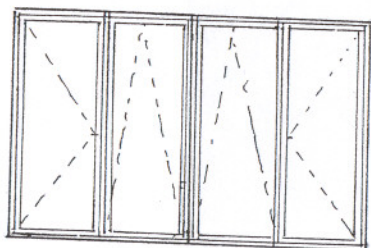
O₈ szt 7
h=115 , s=118



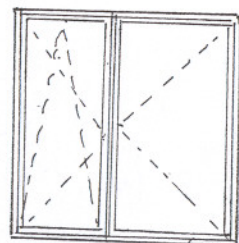
O₉ szt 19
h= 205 ,s= 2x 118



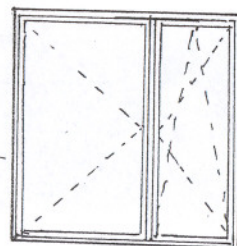
O₁₀ szt 4
h =55, s= 2 x 87



O₁₁ szt 3
h =145, s= 118x2



O₁₂ szt 3
h=145 , s=148



O₁₃ szt 2
h= 145, s=148



O₁₄ szt 3
h =115, s =88



O₁₅ szt2
h= 205 ,s=88